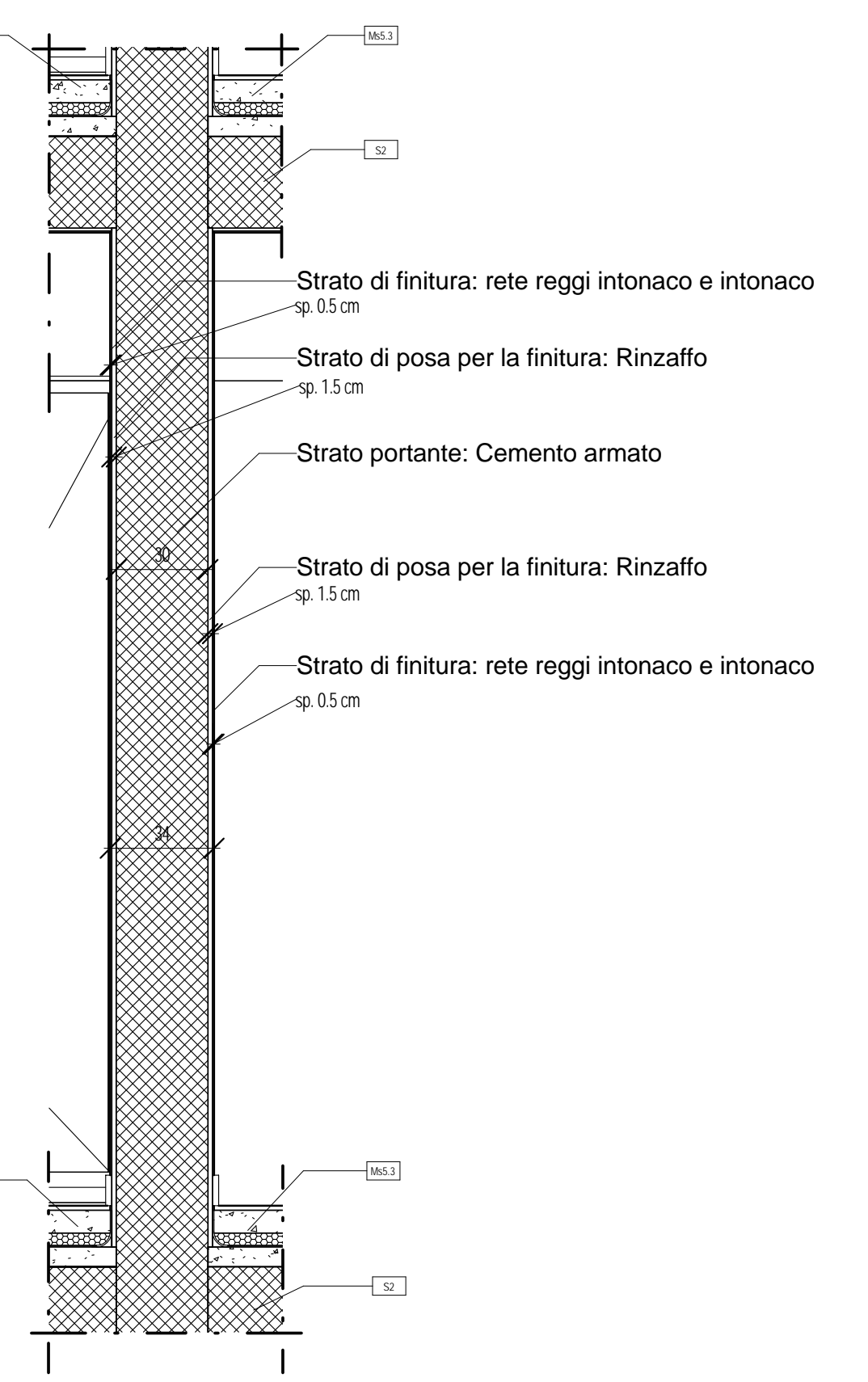
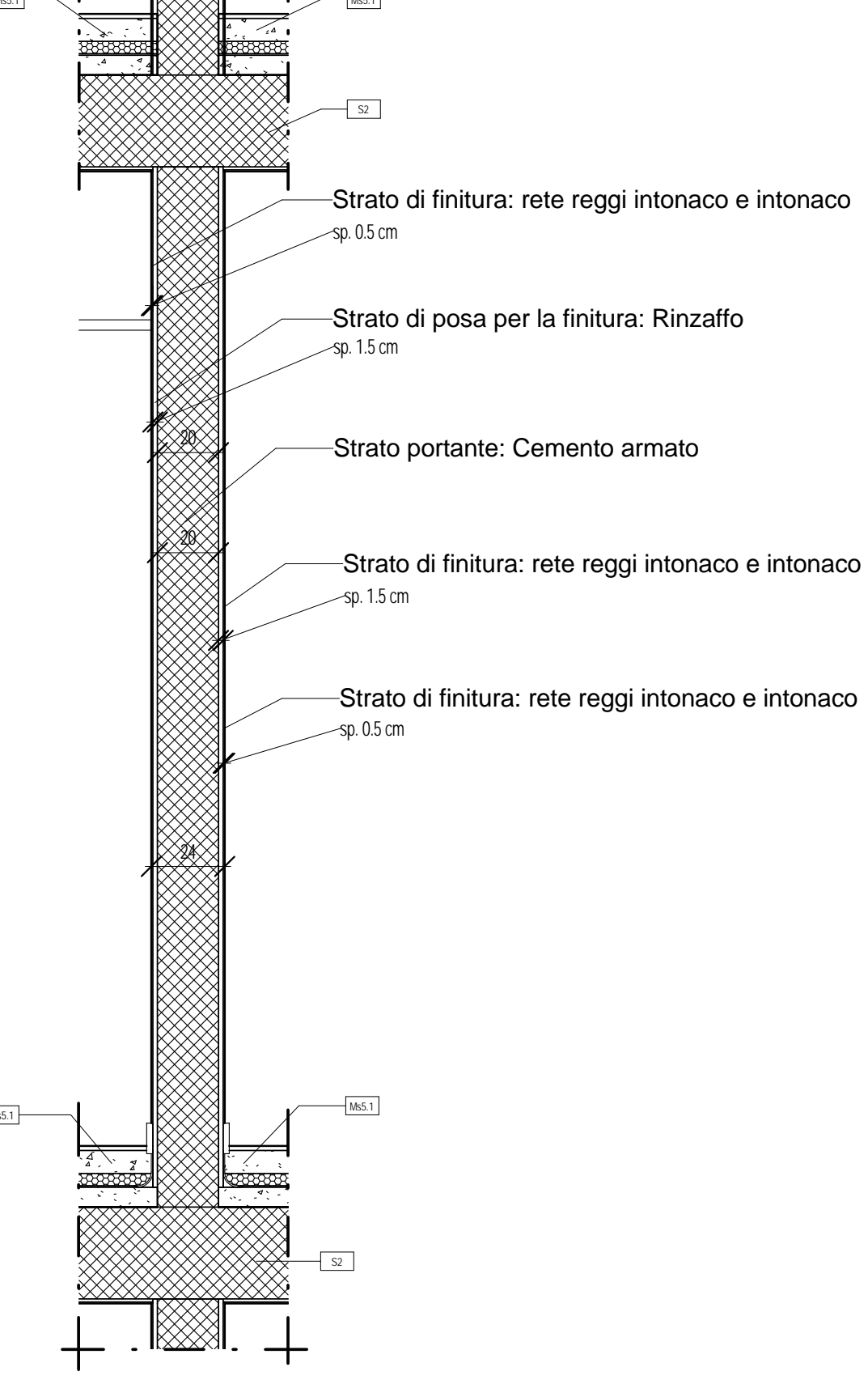


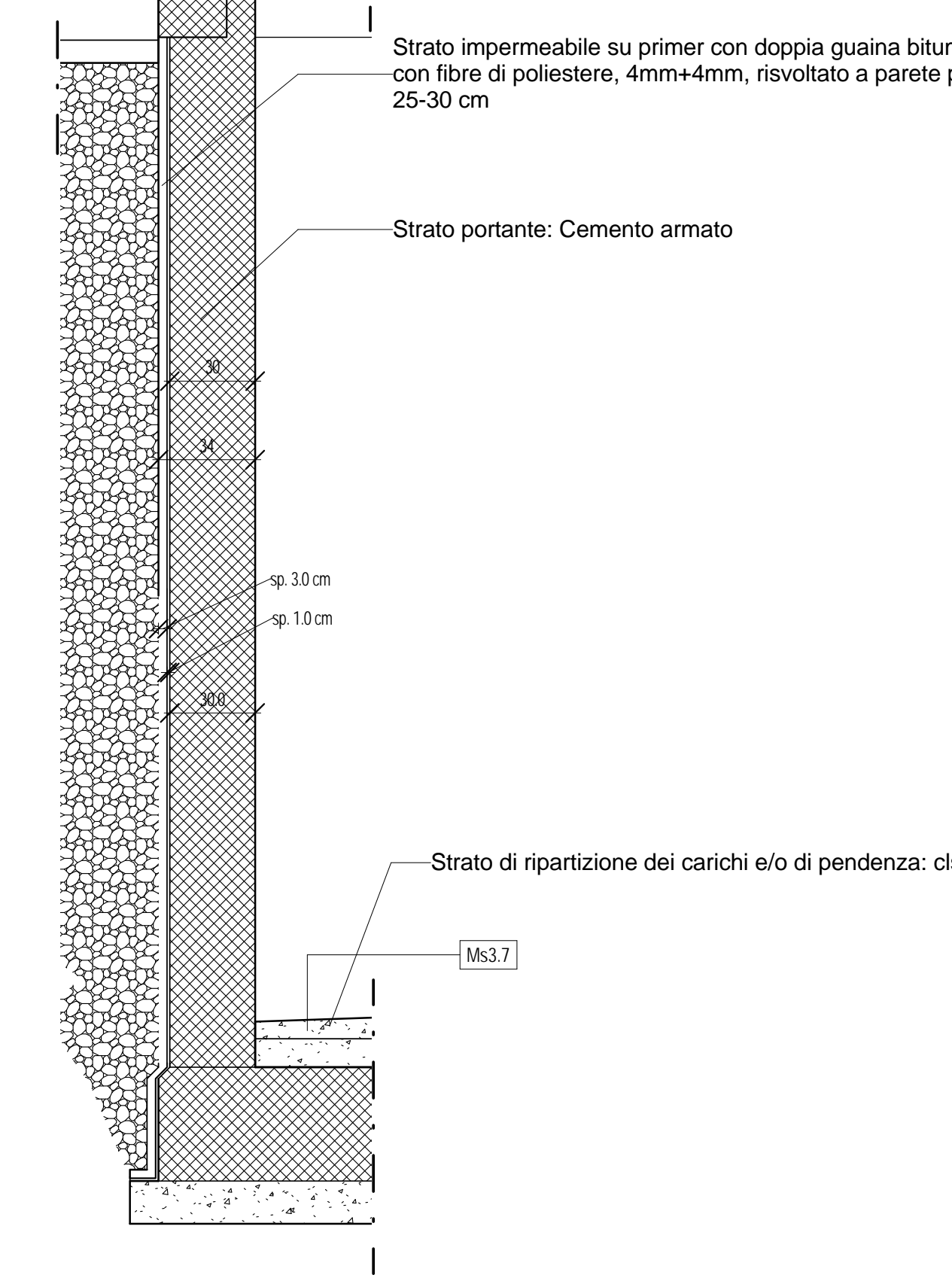
Mc 1 Scala 1:20



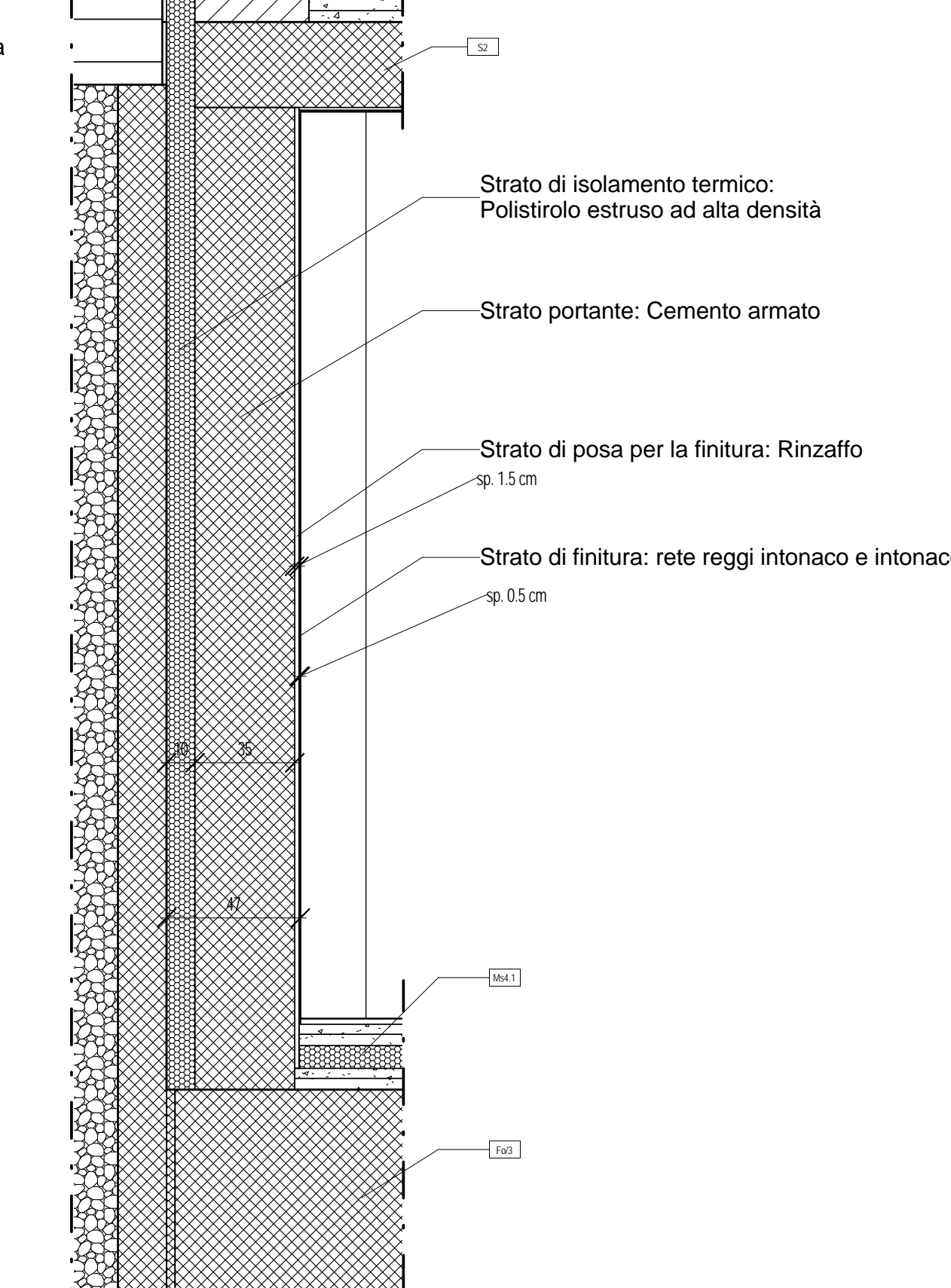
Mc 4 Scala 1:20



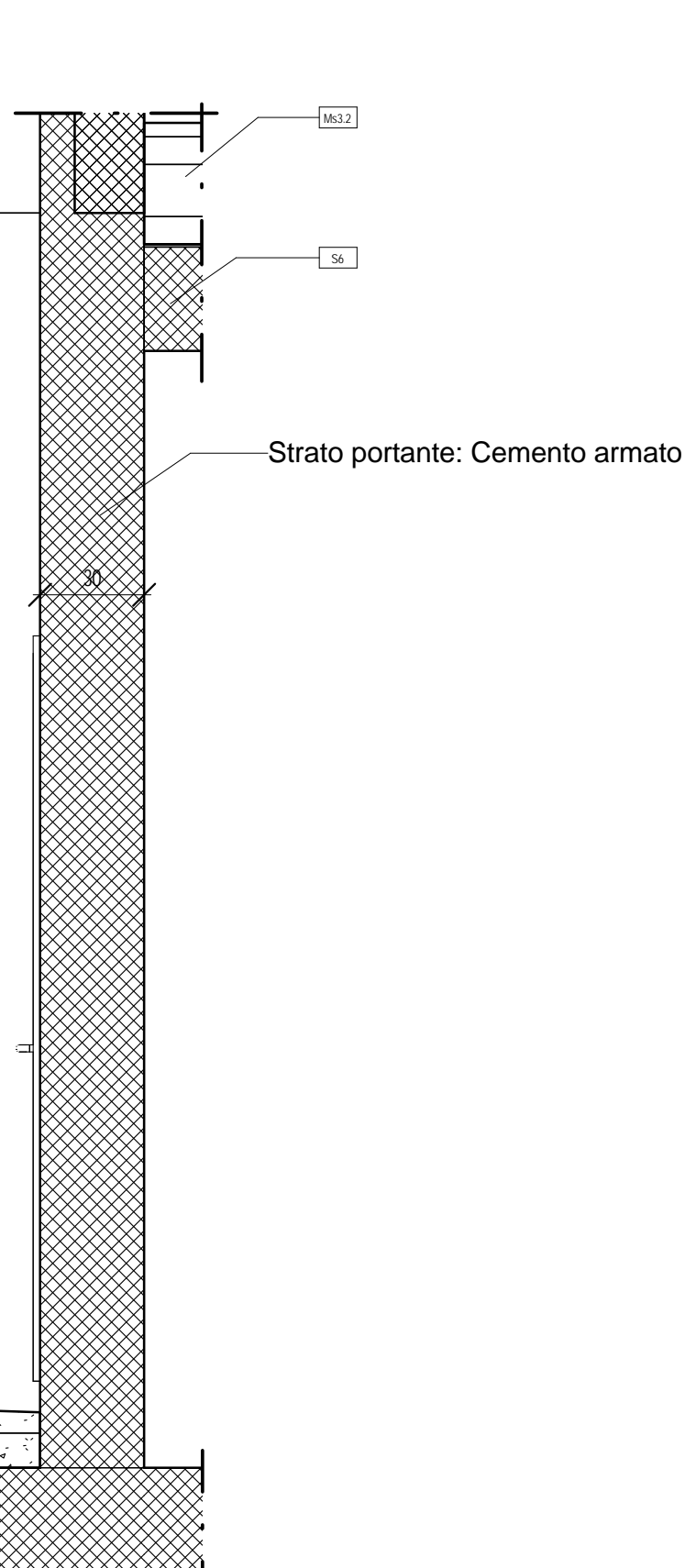
Mc 6 Scala 1:20



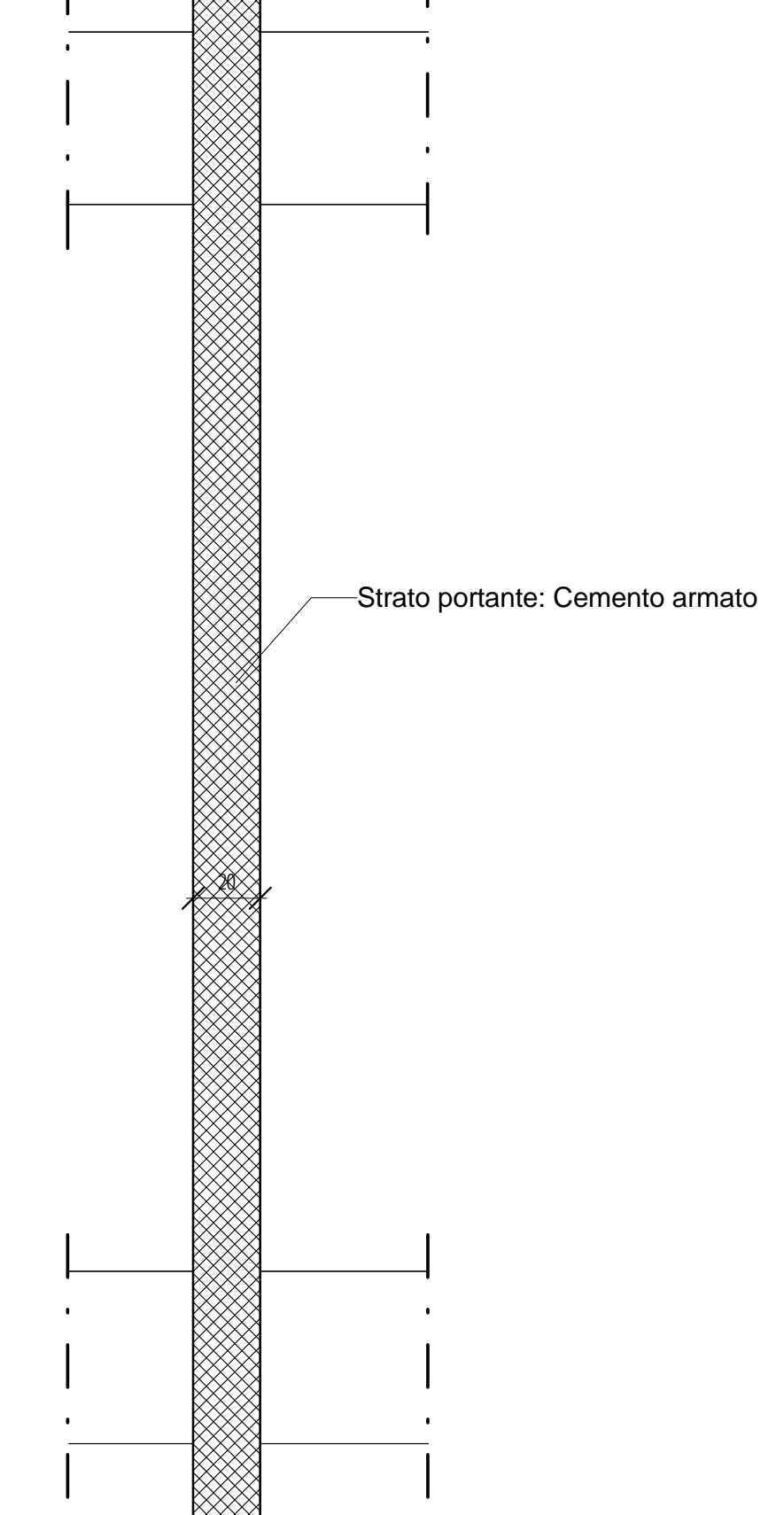
Mc 8 Scala 1:20



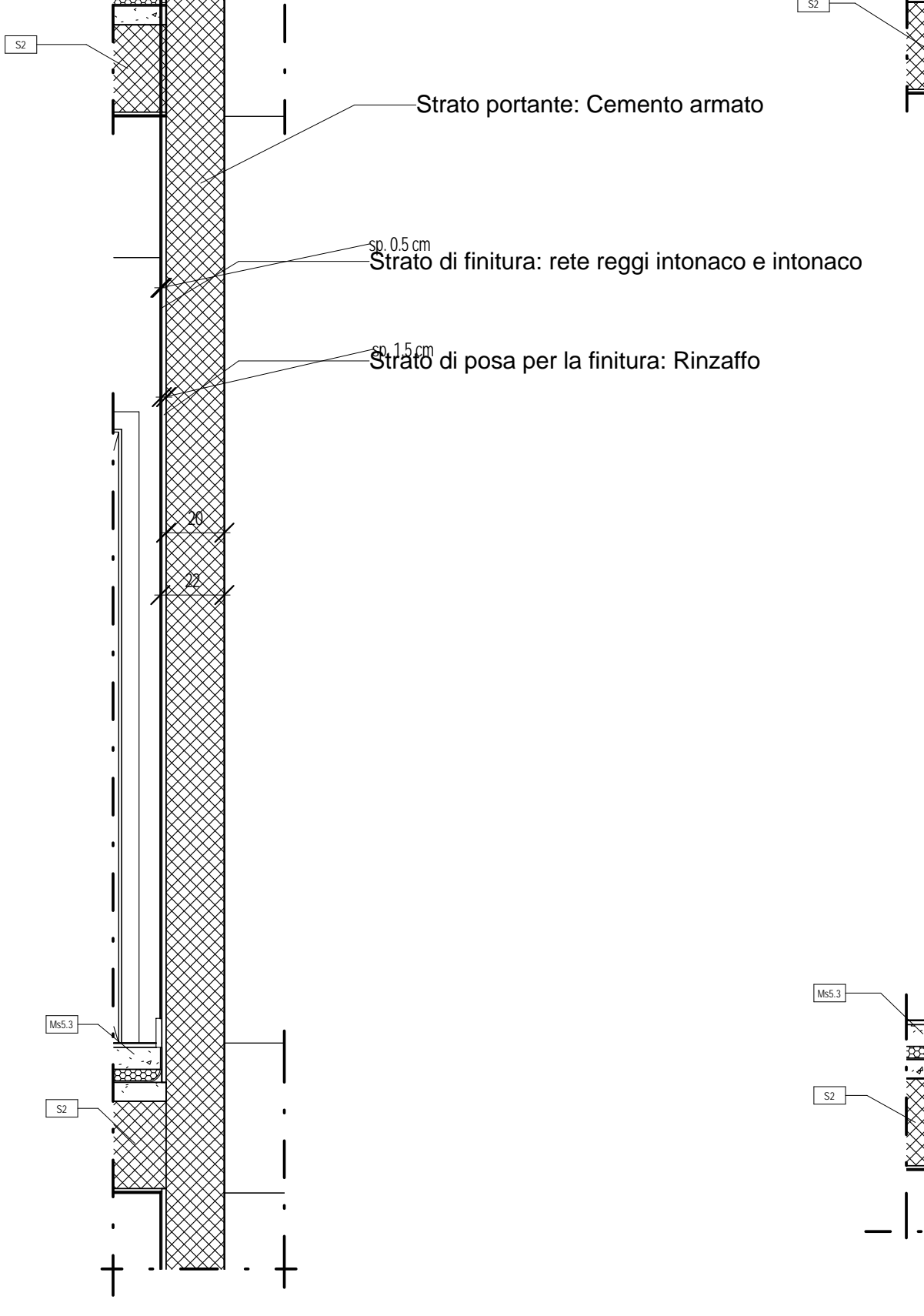
Mc 9 Scala 1:20



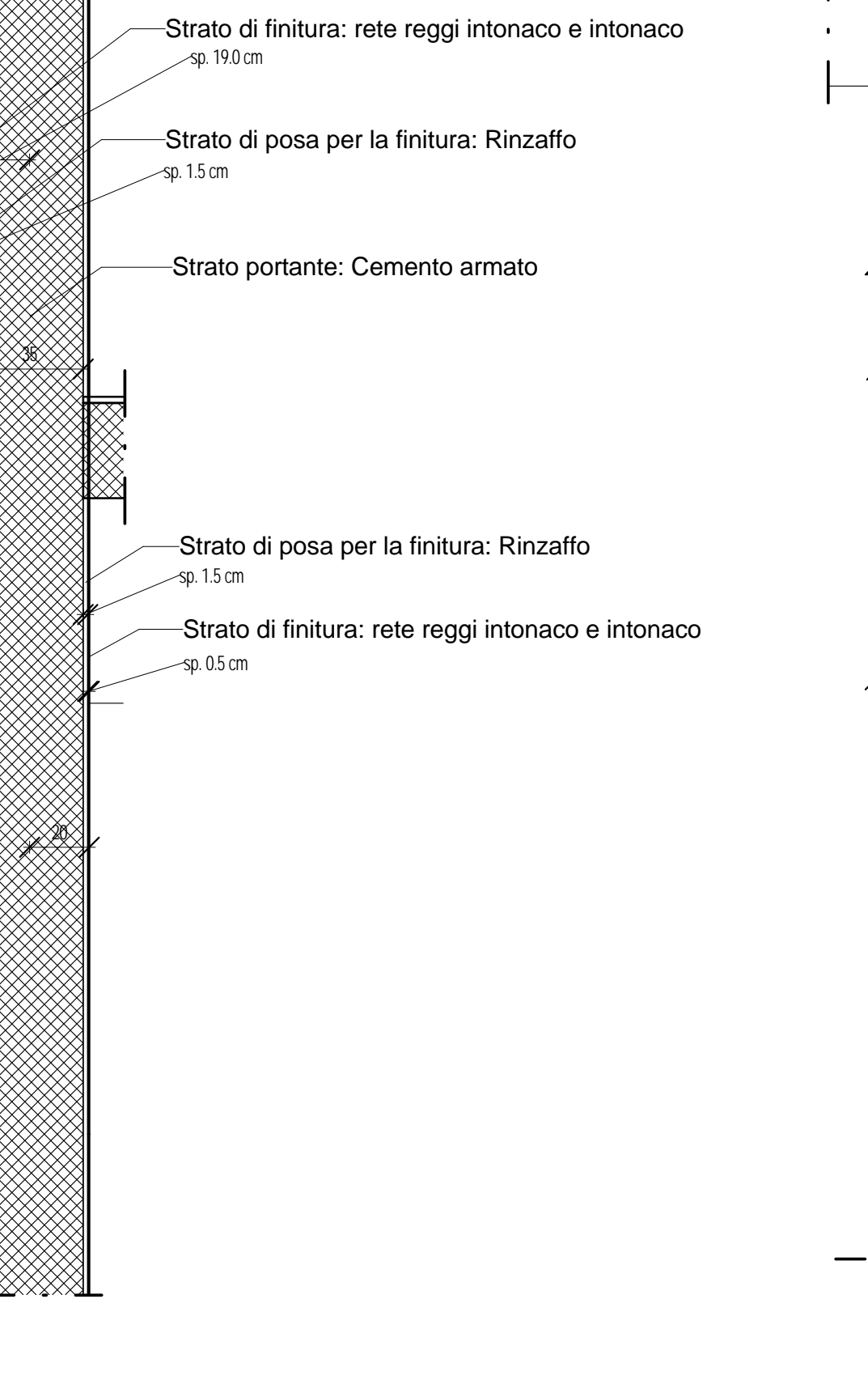
Mc 10 Scala 1:20



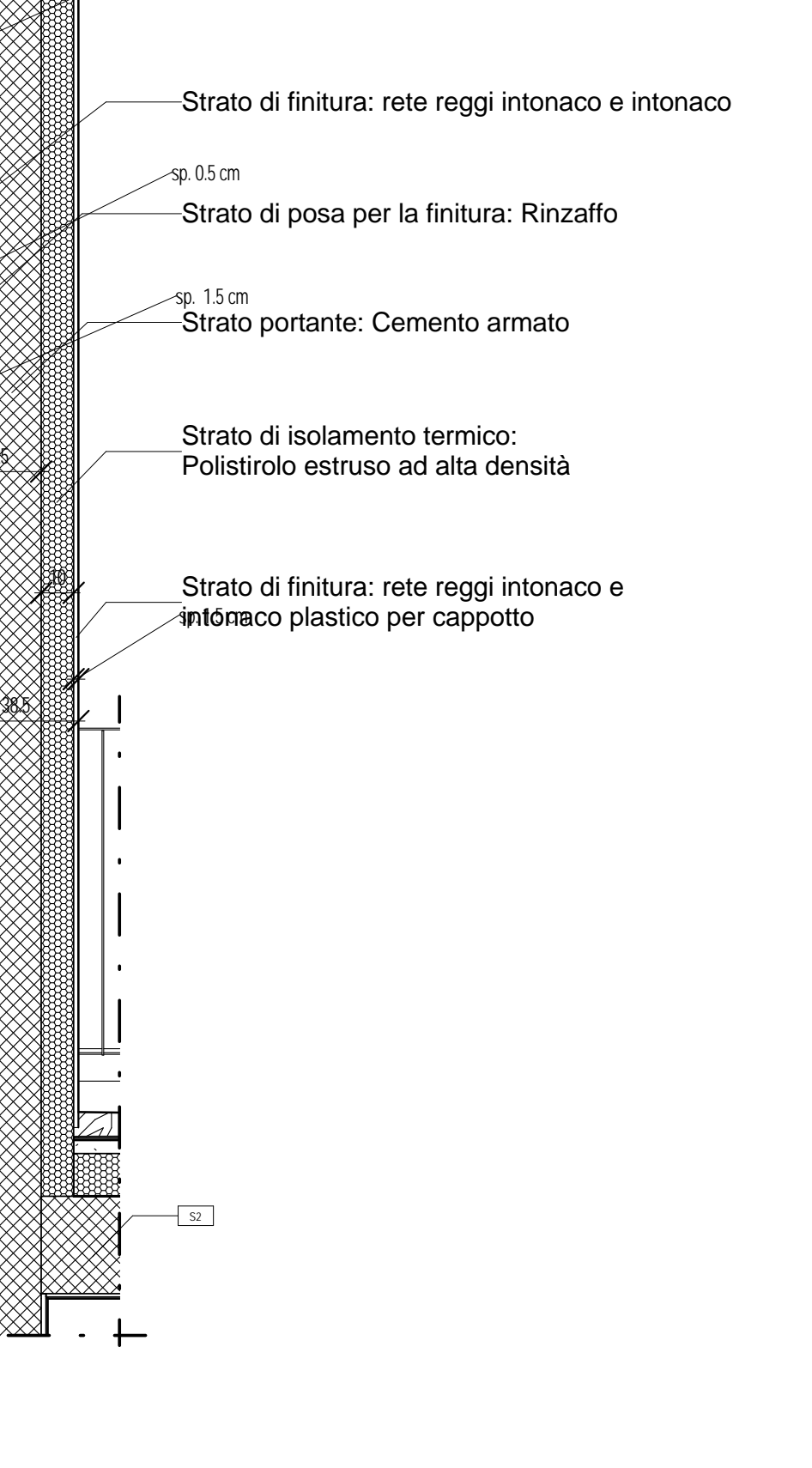
Mc 11 Scala 1:20



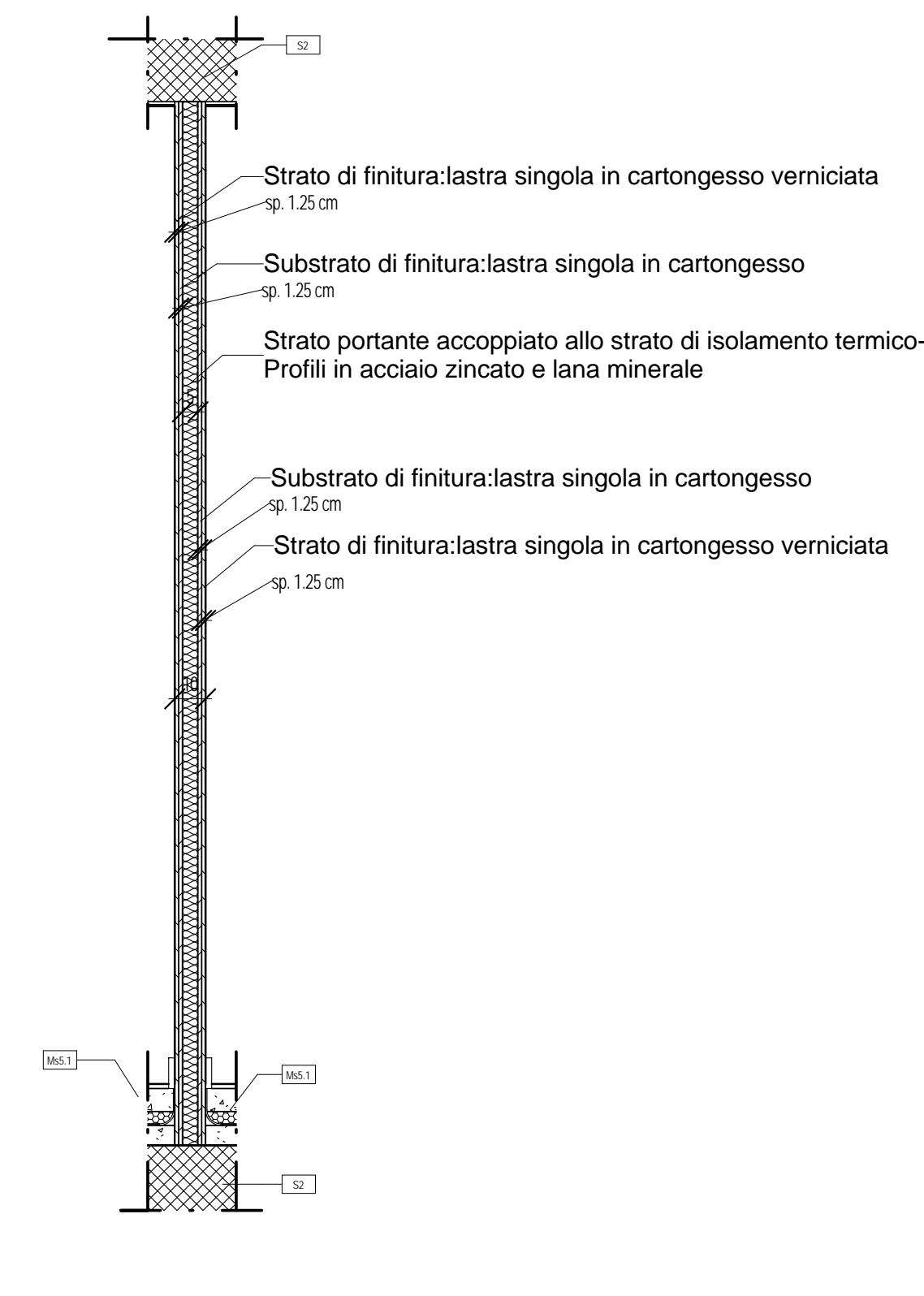
Mc 12 Scala 1:20



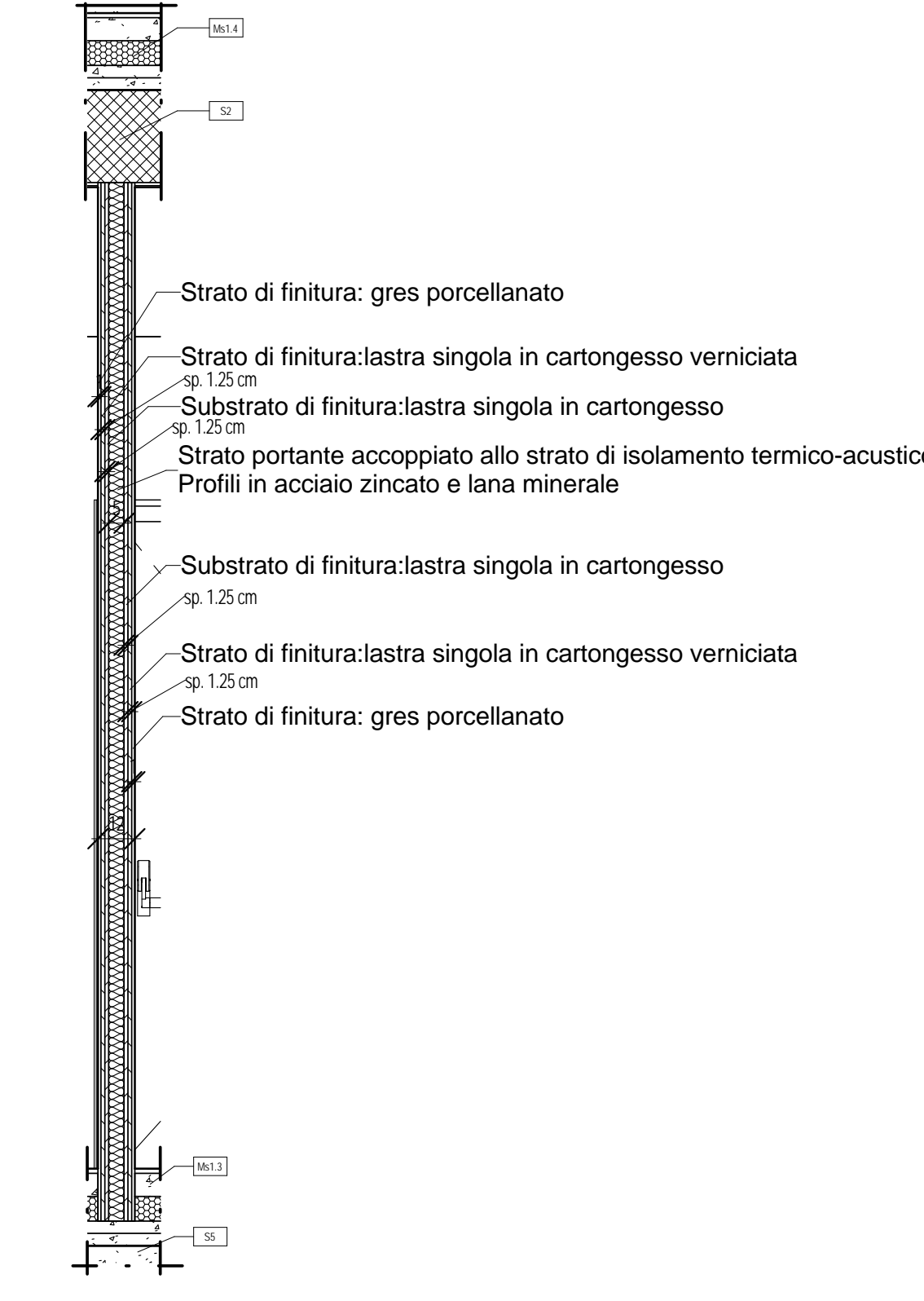
Mc 13 Scala 1:20



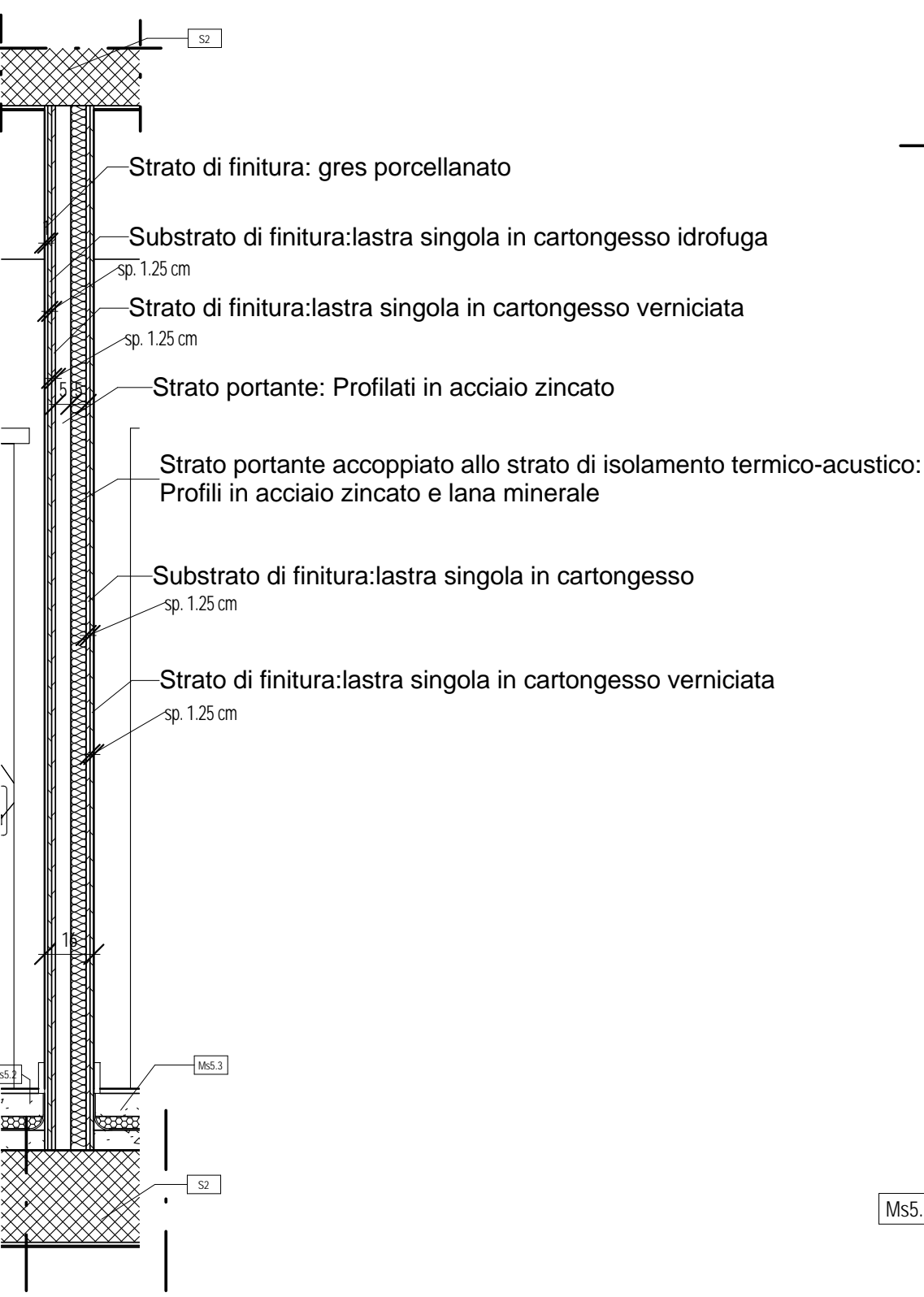
Mc/14 Scala 1:20



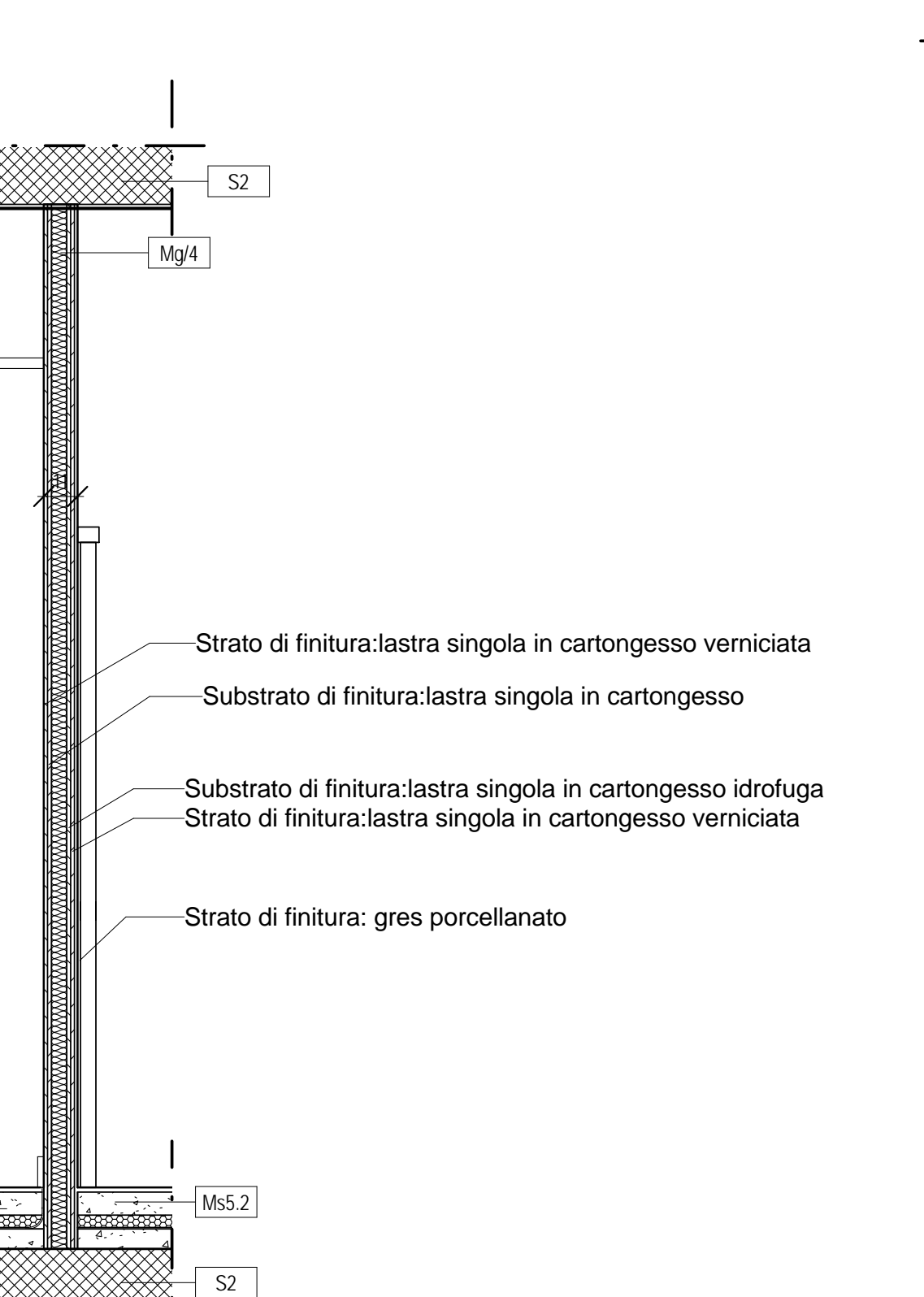
Mg 2 Scala 1:20



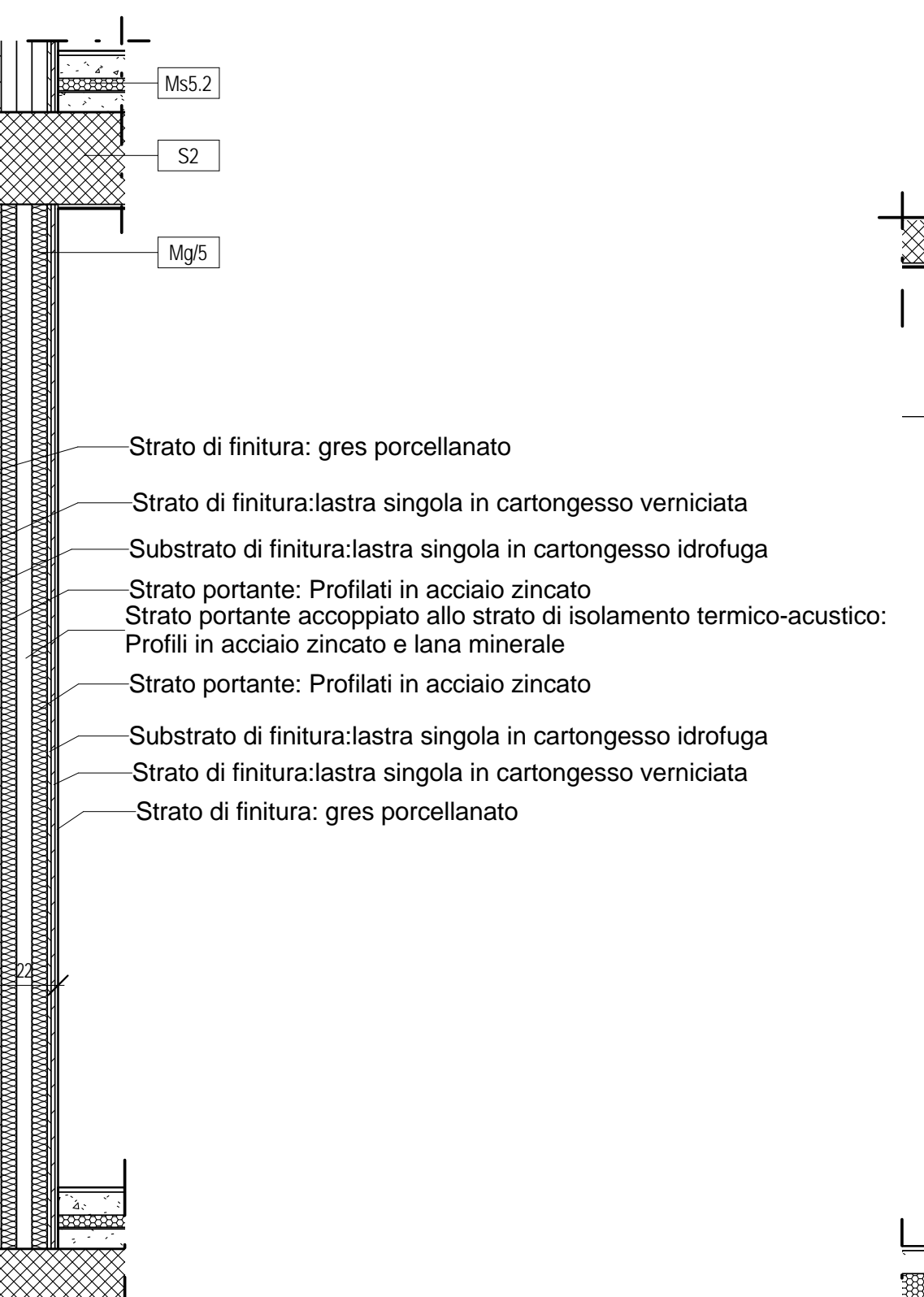
Mg 2.2 Scala 1:20



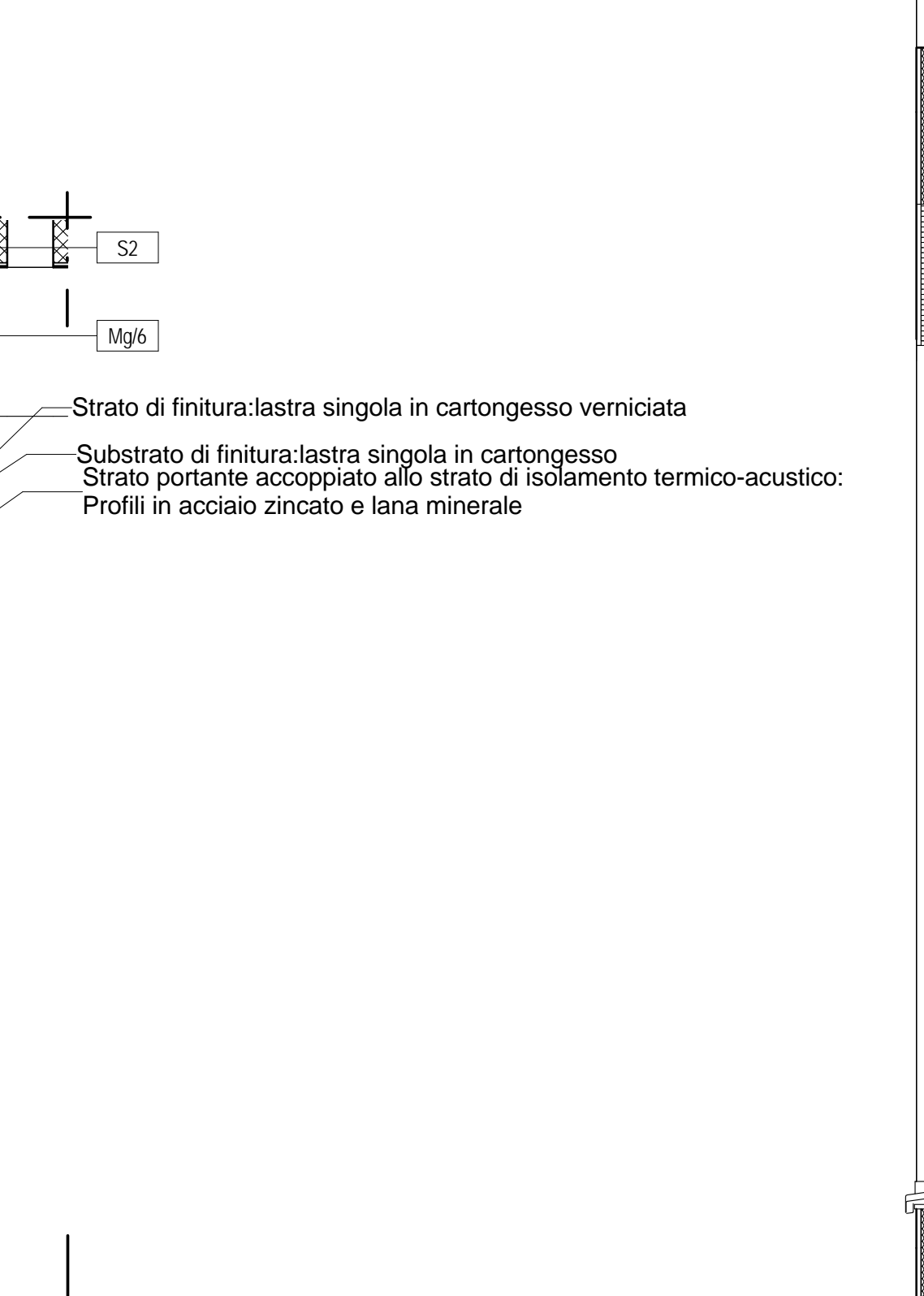
Mg 3 Scala 1:20



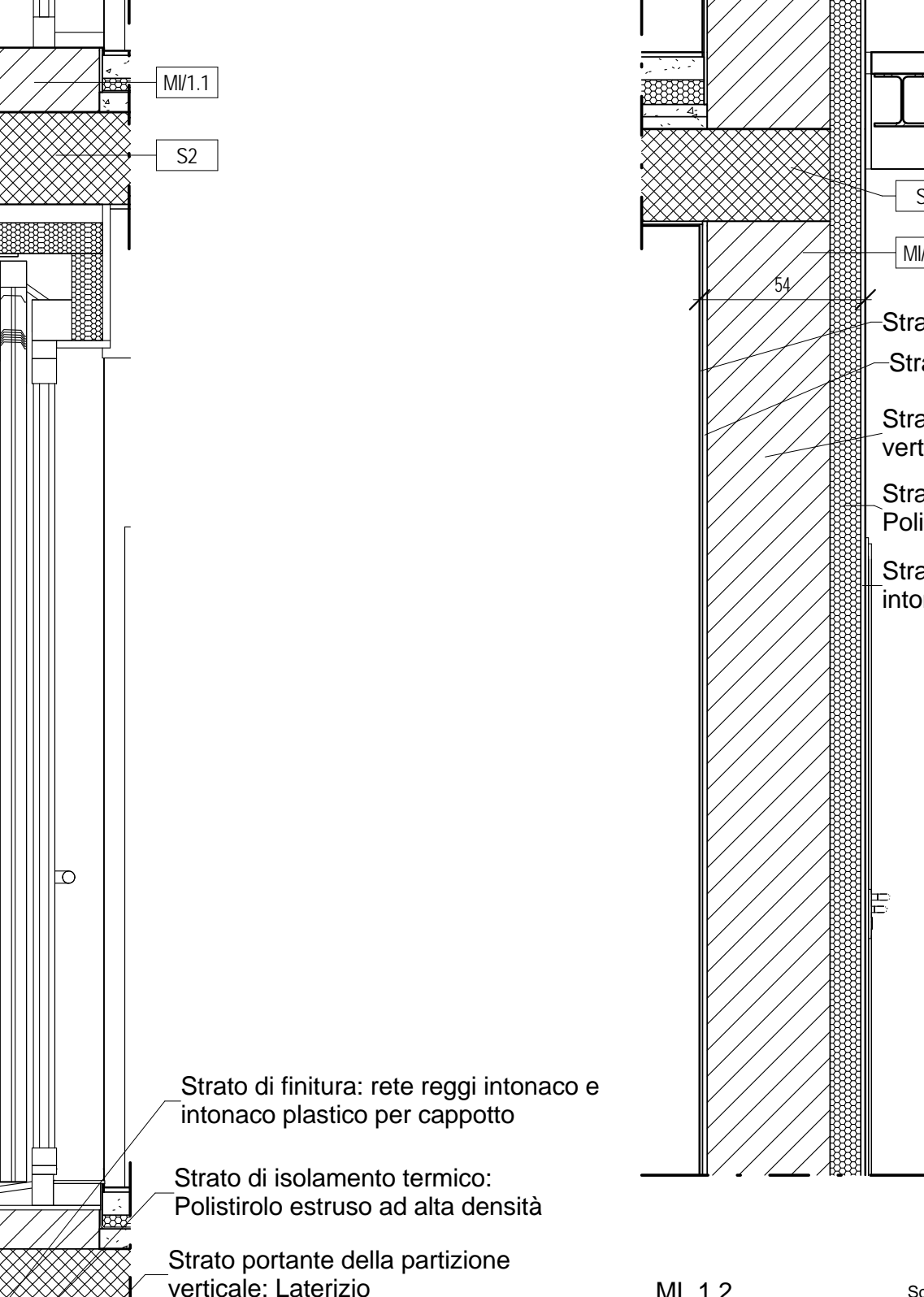
Mc 4 Scala 1:20



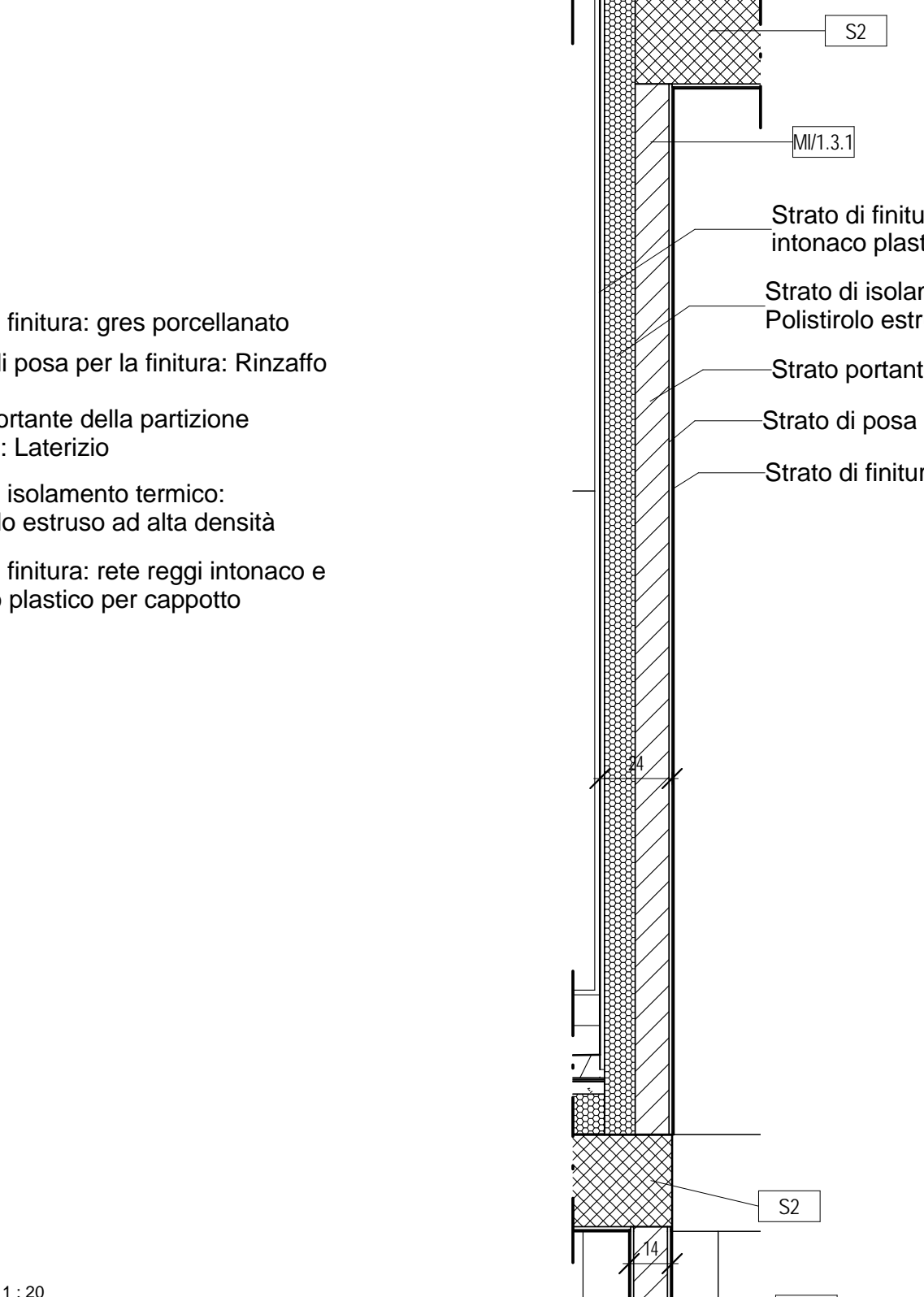
DE\_20\_Mg 5 Scala 1:20



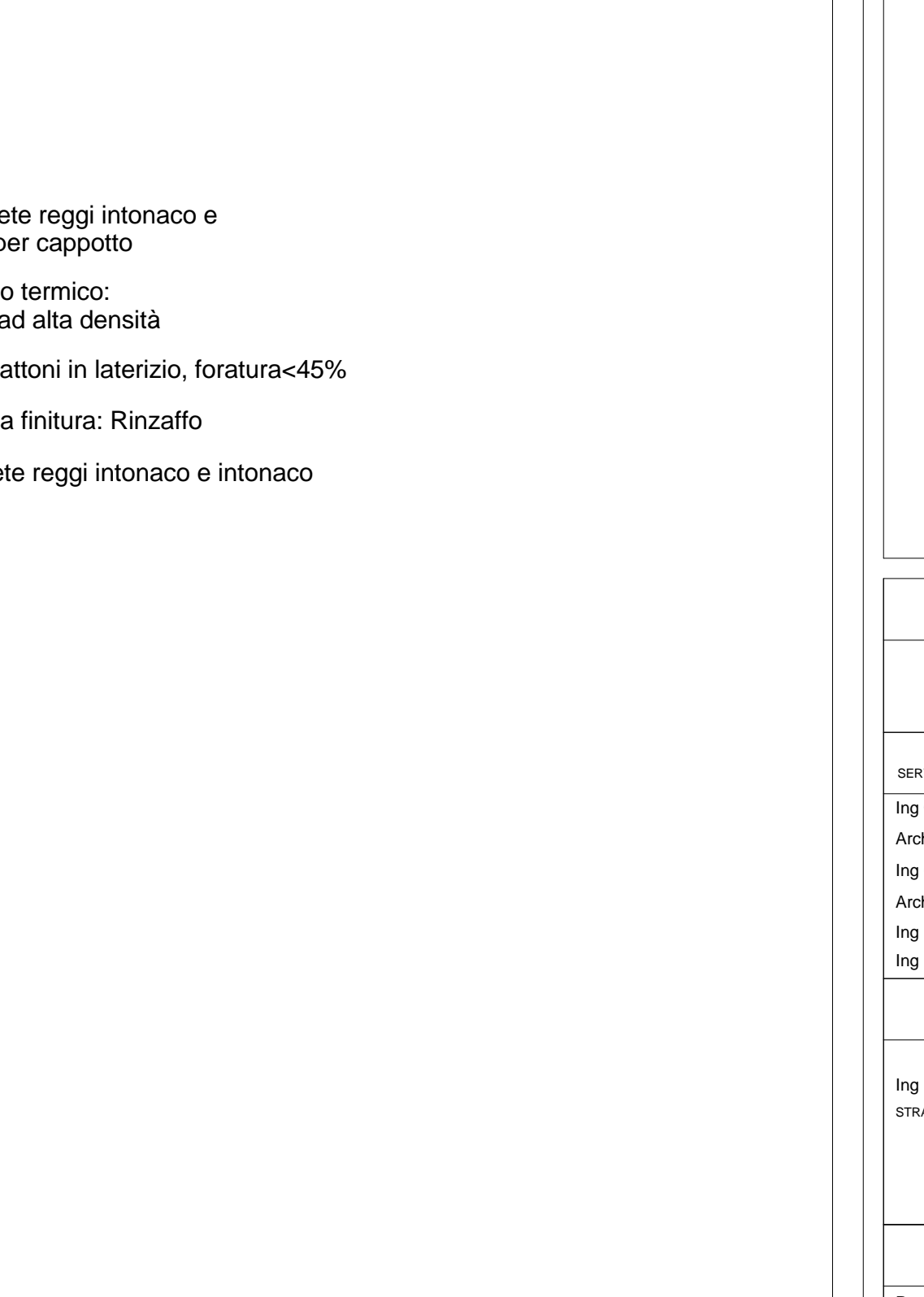
Mg 6 Scala 1:20



DE\_20\_MI1.1 Scala 1:20




ML 1.2 Scala 1:20



MI 1.3 - MI 1.3.1 Scala 1:20

**POLITECNICO DI TORINO**  
- AREA EDILIZIA E LOGISTICA -  
C.SO DUCA DEGLI ABRUZZI, 24 - 10129 TORINO

  
**REALIZZAZIONE DI RESIDENZE UNIVERSITARIE**  
**"RESIDENZA CESARE CODEGONO"**  
**IN TORINO, VIA P. BORSELLINO**  
**PROGETTO ESECUTIVO**

RESPONSABILE DEL PROCEDIMENTO E DEI LAVORI:  
AREA EDILIZIA E LOGISTICA  
Arch. G. Biscari

<p><b>PROGETTO ARCHITETTONICO:</b> SERVIZIO GESTIONE PATRIMONIO IMMOBILIARE - SERVIZIO MESSA A NORMA E AMBIENTE</p> <p>Ing. C. Amis Arch. D. Caracci Ing. G. Cangialini Arch. M. Garis Ing. P. Leraio Ing. M. Lo Turco</p>	<p><b>PROGETTO IMPIANTI MECCANICI:</b> SERVIZIO ADEGUAMENTO STRUTTURE E IMPIANTI</p> <p>Ing. S. Belloni Ing. D. Bertone Ing. F. Facelli Ing. F. Laguarda</p>
<p><b>PROGETTO STRUTTURALE:</b></p> <p>Ing. C. Baldi STRADA AL FORNO, 34 10129 ASTI</p>	<p><b>PROGETTO IMPIANTI ANTINCENDIO:</b> SERVIZIO ADEGUAMENTO STRUTTURE E IMPIANTI</p> <p>Ing. M. Coatto Ing. F. Facelli</p>
<p><b>PROGETTO IMPIANTI ELETTRICI E SPECIALI:</b> SERVIZIO ADEGUAMENTO STRUTTURE E IMPIANTI</p> <p>Per. Ing. L. Marone Ing. A. M. Palumbo Per. Ing. R. Perillo Per. Ing. G. Riva Per. Ing. A. Santoro Ing. F. Tonda Roc</p>	<p><b>PIANO DI SICUREZZA E COORDINAMENTO:</b> SERVIZIO GESTIONE PATRIMONIO IMMOBILIARE</p> <p>Geom. C. Dal Cason</p>

**ABACO DELLE MURATURE - PARTICOLARI**

DATA: Luglio 2011    AGG: Aprile 2013  
SCALA: 1:20  
**COD AR31**

A TERME DI LEGGE IL POLITECNICO DI TORINO HA LA PROPRIETÀ DI QUESTO DOCUMENTO CHE NON POTRÀ ESSERE COPIATO, RIPRODOTTO O COMUNICATO A TERZI SENZA AUTORIZZAZIONE SCRITTA.